

# ECONOMIC VALUE OF ARTS, SCREEN & CULTURE

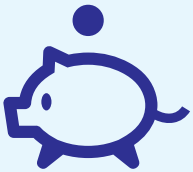
ALL FIGURES ARE FROM **2016/17**, THE MOST RECENT YEAR OF DATA AVAILABLE AT THE TIME OF ANALYSIS

## CONTRIBUTION TO NSW GROSS STATE PRODUCT

In 2016/17, the arts, screen and culture sector contributed

**\$16.4 BILLION**

to NSW's GSP. This is made up of:



**\$8.7 BILLION** in direct value added from the arts screen and culture sector.

**\$7.7 BILLION** in indirect value flowing from arts, screen and culture activities into other sectors.

The arts, screen and culture sector generated **2.6%** of NSW's GSP in 2016/17.

## CONTRIBUTION TO EMPLOYMENT

The NSW arts, screen and culture sector employs approximately **118,800 FTE workers**.



An estimated **82,400 FTE** workers were directly employed in the arts, screen and culture sector.

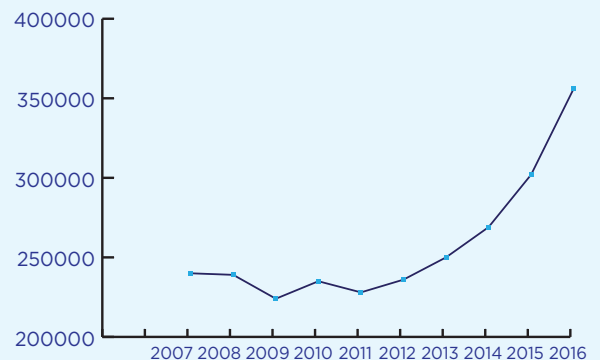
A further **36,400 FTE** jobs in activities flowing on from the arts, screen and culture sector.

## CULTURAL TOURISM



The number of international cultural tourists has grown by **50 percent** over the decade to 2016.

Domestic and international cultural and heritage visitors are estimated to have spent over **\$12.1 billion** across NSW in 2016.



## IMPACT OF SPENDING & INVESTMENT



Every dollar expended annually in NSW on arts, screen and culture generates a return of **\$1.88** to the NSW economy.\*

\*NOTE EXPENDITURE IS NOT LIMITED TO NSW GOVERNMENT INVESTMENT