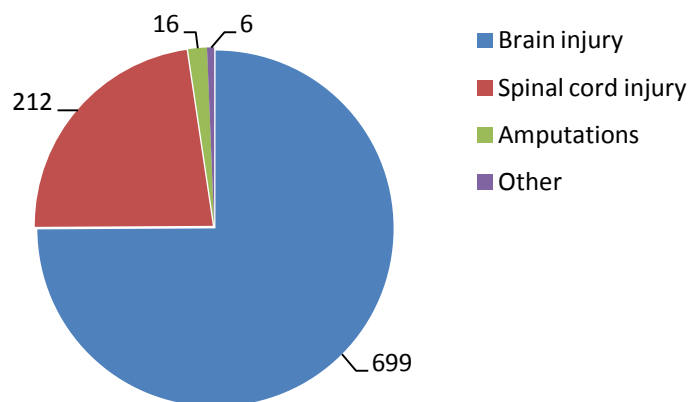


Lifetime Care and Support Scheme

The Lifetime Care and Support Scheme (the Scheme) provides lifelong treatment, rehabilitation and attendant care for people severely injured in a motor vehicle accident in NSW, regardless of who was at fault. Injuries can include spinal cord injury, moderate to severe brain injury, multiple amputations, severe burns or permanent blindness.

As of 30 June 2014, there were 933 participants in the Scheme. Of these, 106 were under 16 when they had their accident. Participants could have had any involvement in a motor accident, such as driver, passenger, motor bike rider, pillion passenger or pedestrian.

Injury Type (30 June 2014)



73 per cent of adults and 90 per cent of people under 16 years suffered a traumatic brain injury from the accident.

The Lifetime Care and Support Authority (LTCSA) administers the Scheme and its role is to arrange, regularly review and pay for services for participants; regulate service providers to achieve quality services; and maintain financial viability through levy setting and fund management.

Anyone severely injured in a motor accident in NSW from 1 October 2007 may make an application to the LTCSA to enter the Scheme. Children aged under 16 years who were severely injured in a motor accident in NSW from 1 October 2006 may also make an application.

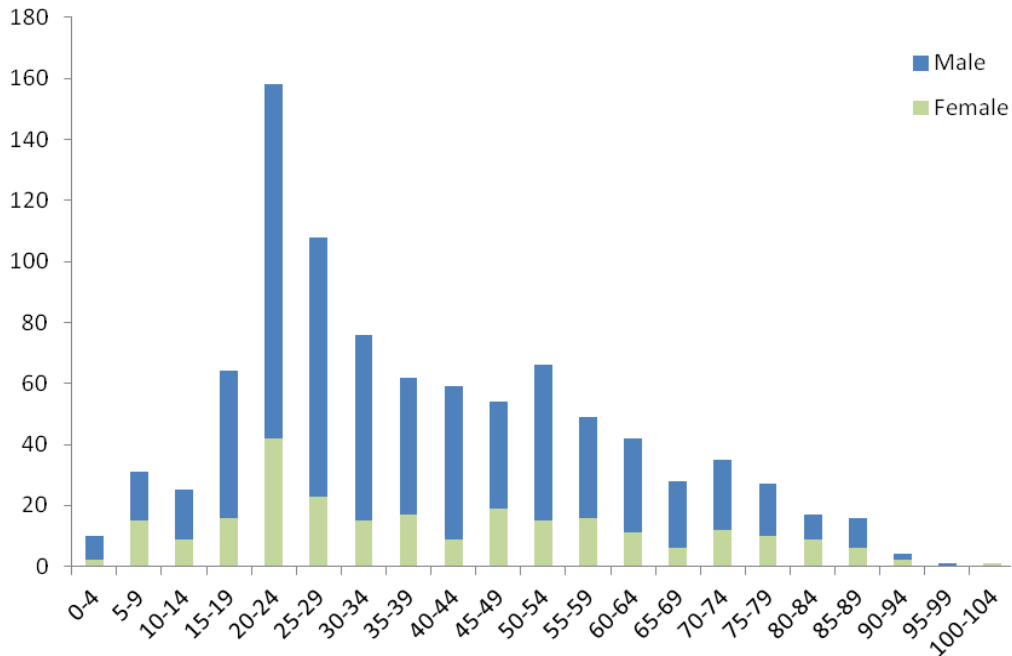
Everyone accepted into the Scheme commences under a two year interim eligibility period as it can be difficult to predict recovery. The interim period allows those who make good recovery to leave the Scheme. About 180 people enter the Scheme each year as interim participants and after two years approximately 120 continue as lifetime participants.

The Scheme pays for medical treatment, rehabilitation and attendant care services that are 'reasonable and necessary' and related to the motor accident injury. The types of services include medical and hospital care, home modifications, vehicle modification, education support, equipment and personal care in the home.

The injured person and their family are central to the planning of the participant's treatment, rehabilitation and care services. Their involvement is actively encouraged in order to best assist them to participate in their roles within their home and community. Whenever required, the injured person is supported by a LTCSA coordinator who assists them to plan their rehabilitation and care as needed.

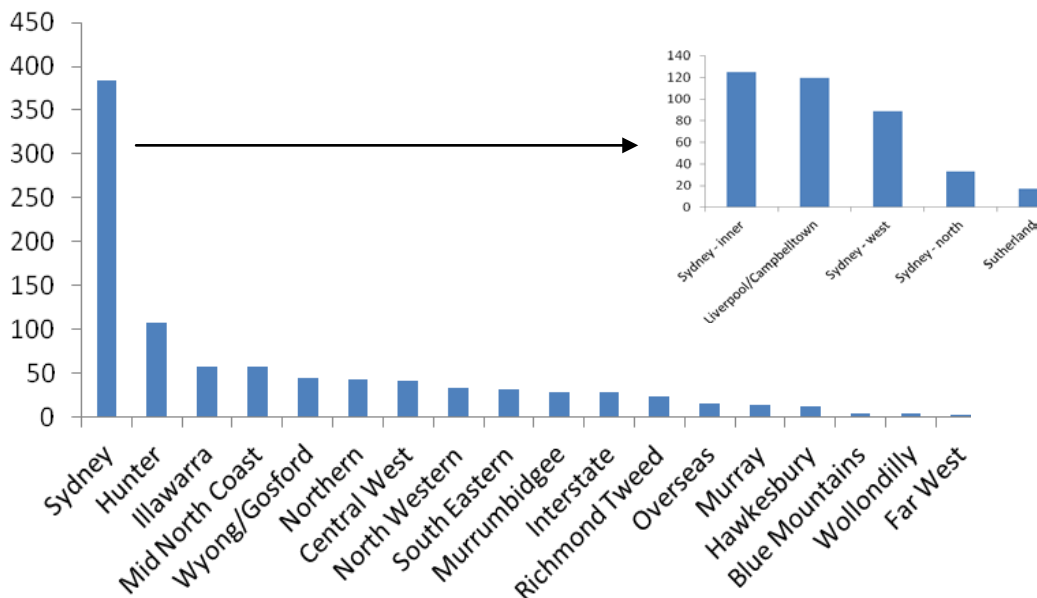
The age group with the strongest representation is 20-24 years, representing 17 per cent of all participants. This is followed by the age group of 25-29 years, with over 12 per cent of participants. The majority of participants are young people and/or of working age.

Participant Age (30 June 2014)



Most Scheme participants live in NSW, with 29 living interstate and 19 living overseas.

Participant Distribution (30 June 2014)



More information about the Lifetime Care and Support Scheme can be found at www.lifetimecare.nsw.gov.au. The participant newsletter [Shine](#) provides stories about participants, their family members and service providers.